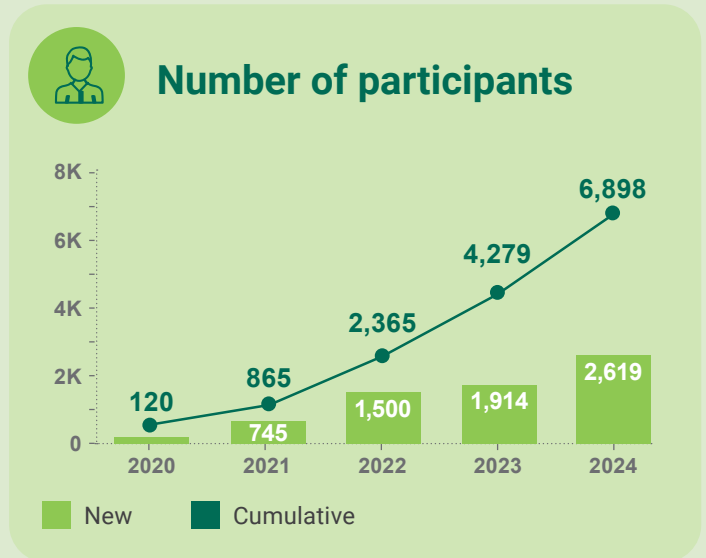
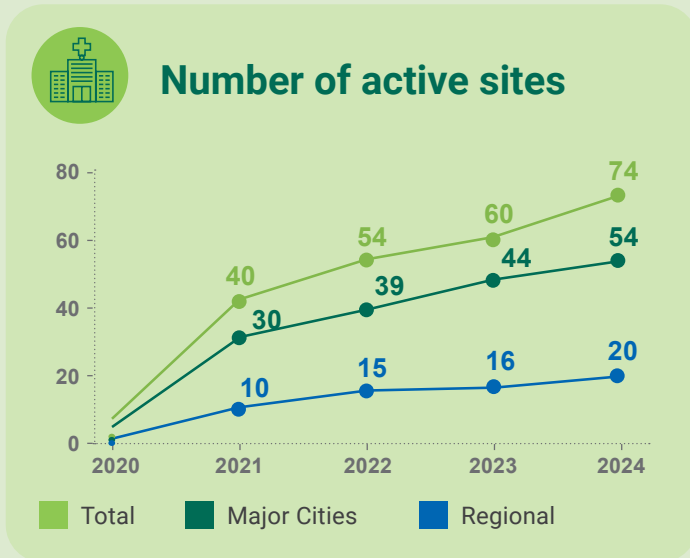


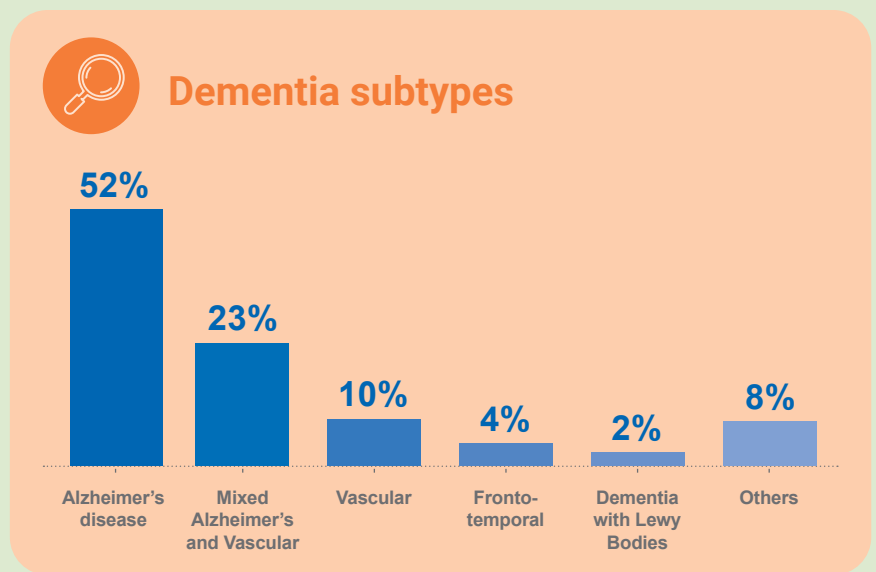
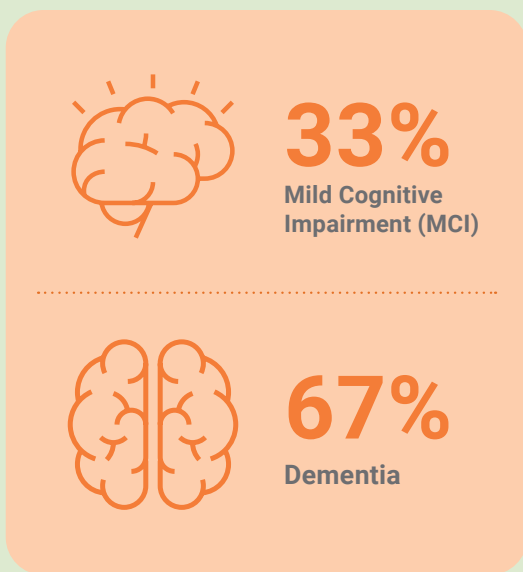
Australian Dementia Network (ADNeT) Registry 2020-2024 Key Findings

A national clinical quality registry to drive continuous improvement in quality of care and patient outcomes from the time of diagnosis with dementia or mild cognitive impairment (MCI)

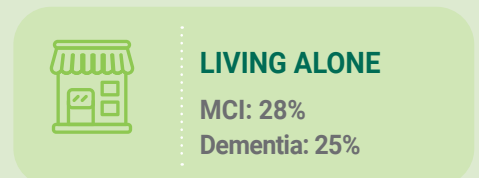
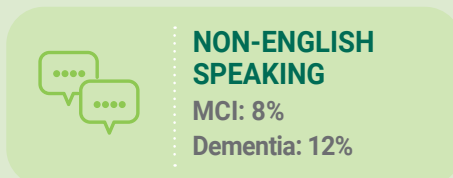
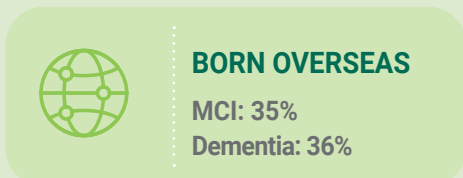
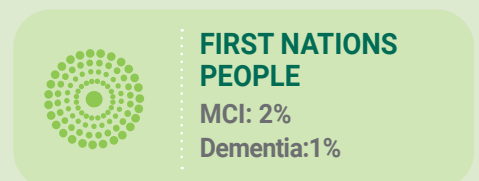
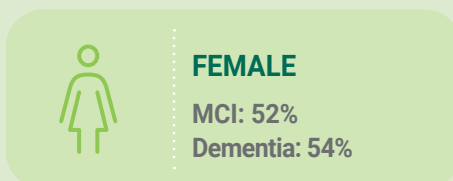
Registry growth



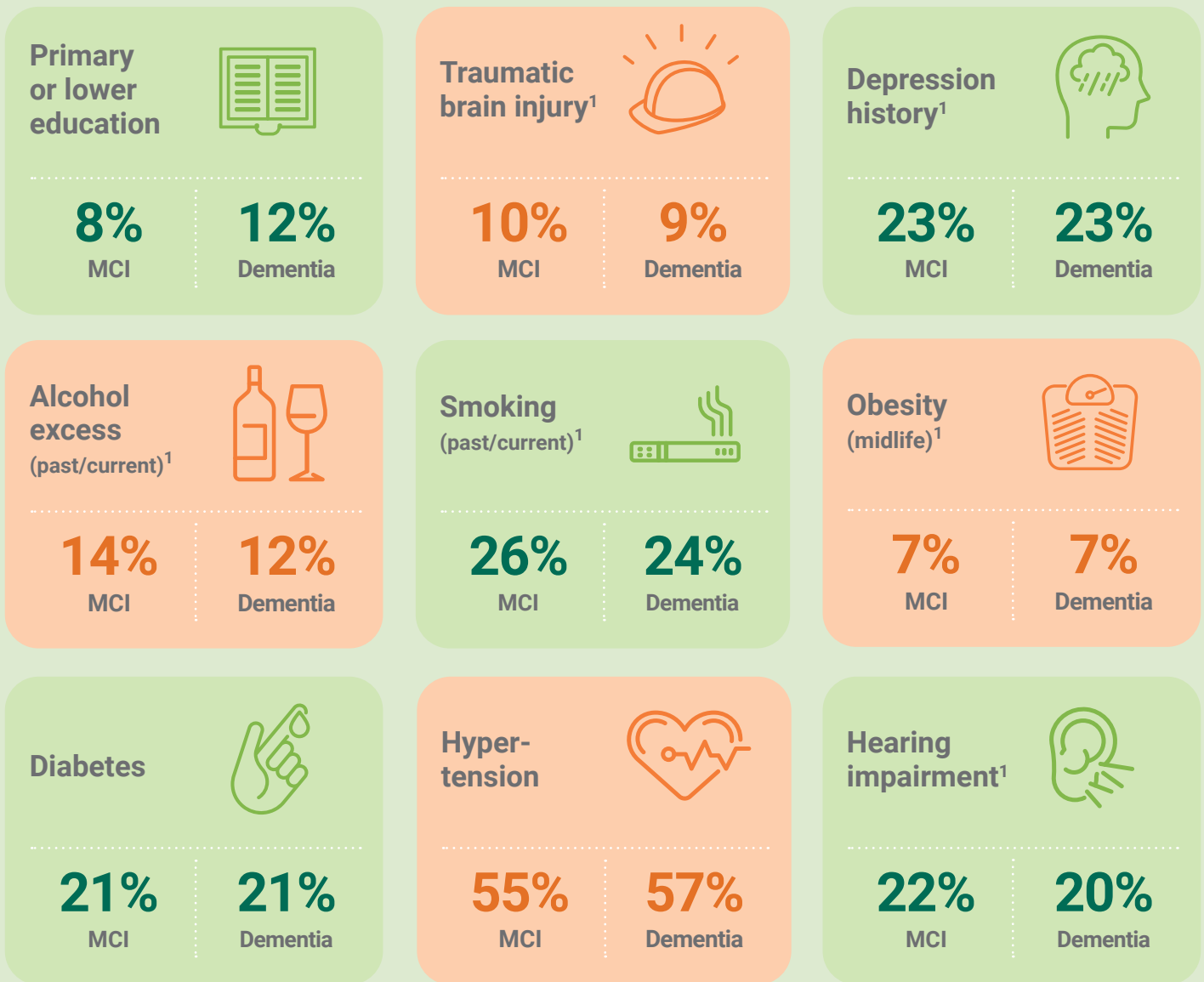
Diagnosis



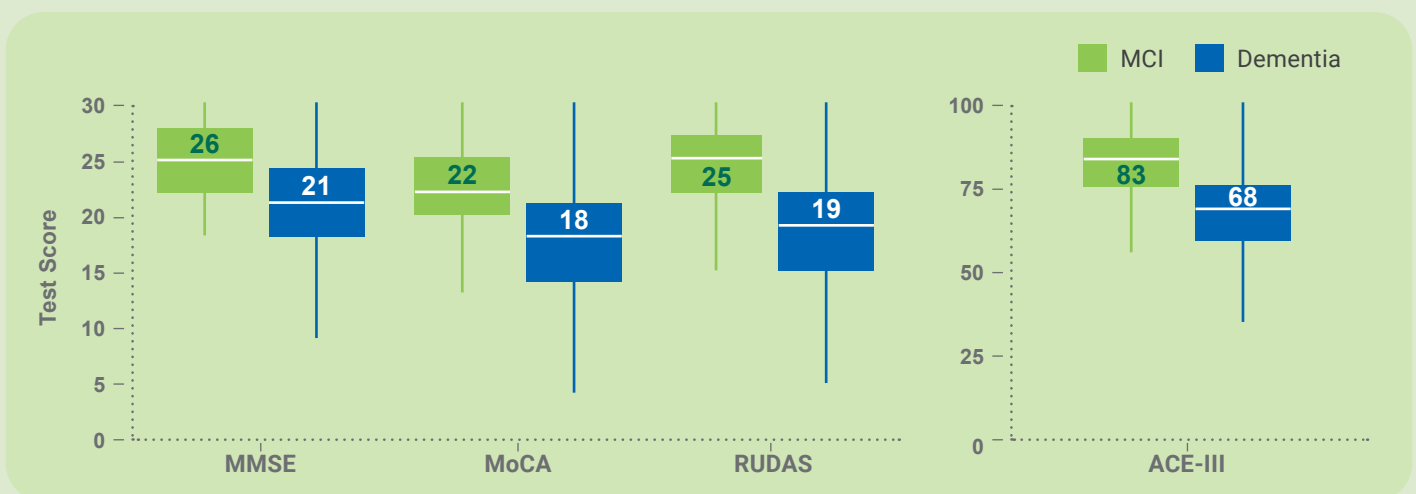
Demographics



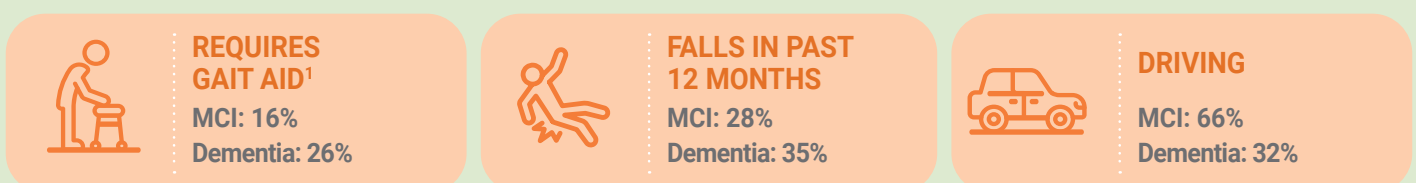
Potentially modifiable risk factors



Cognitive functioning²



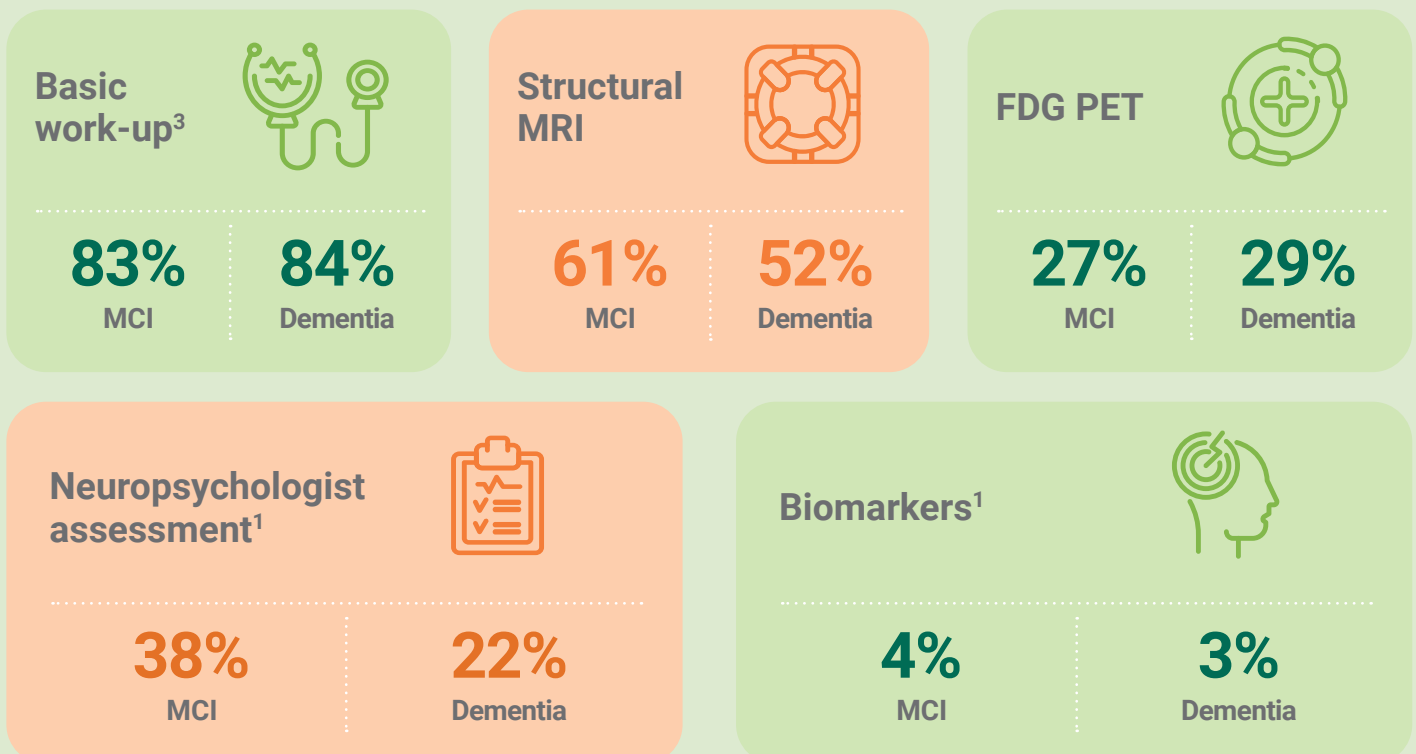
Daily functioning



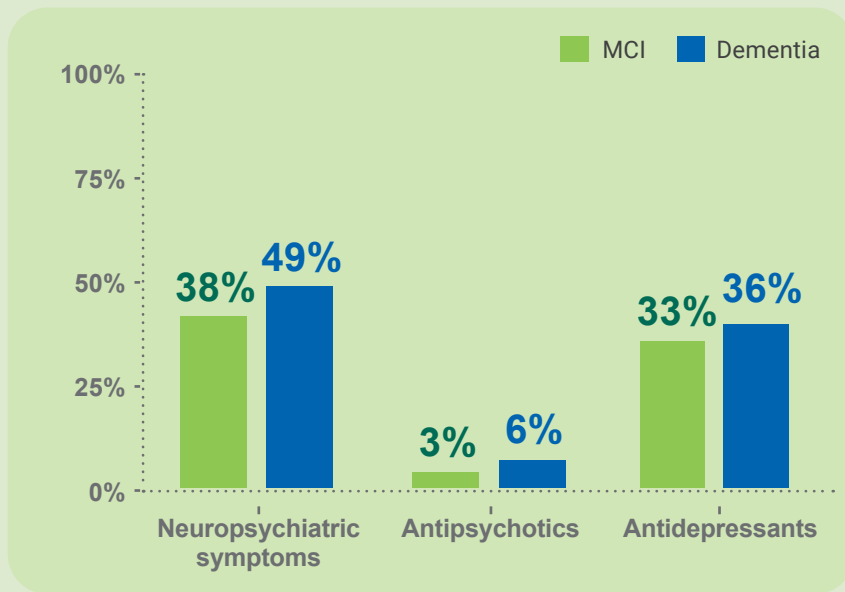
Median time to diagnosis (in days)



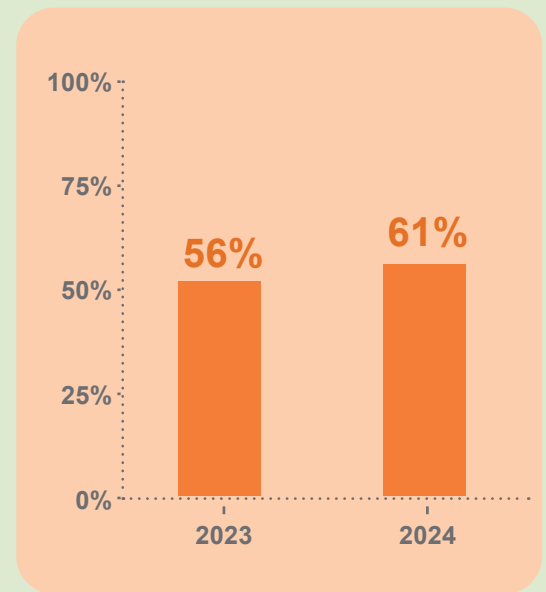
Diagnostic processes



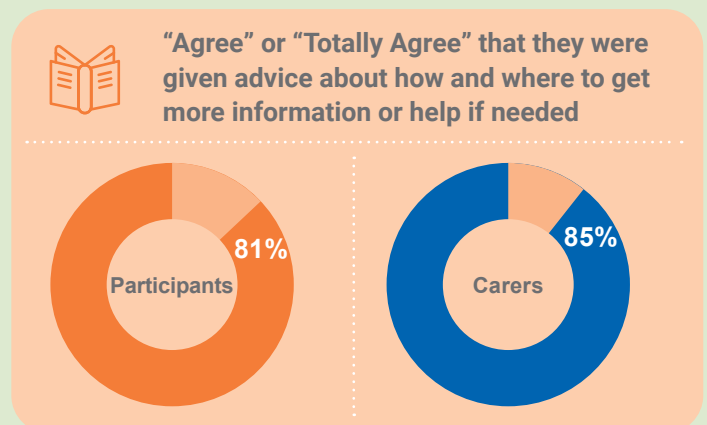
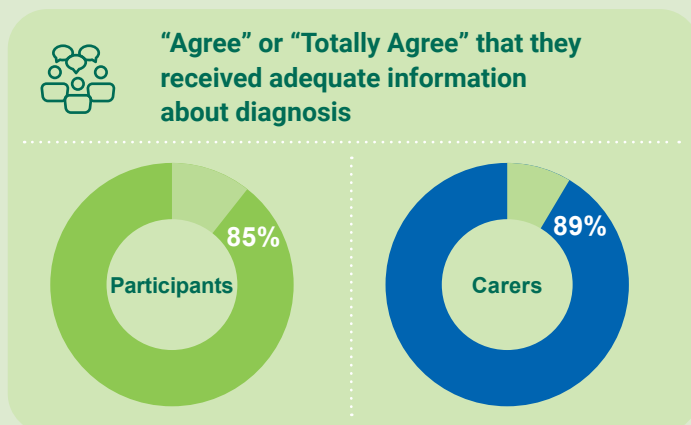
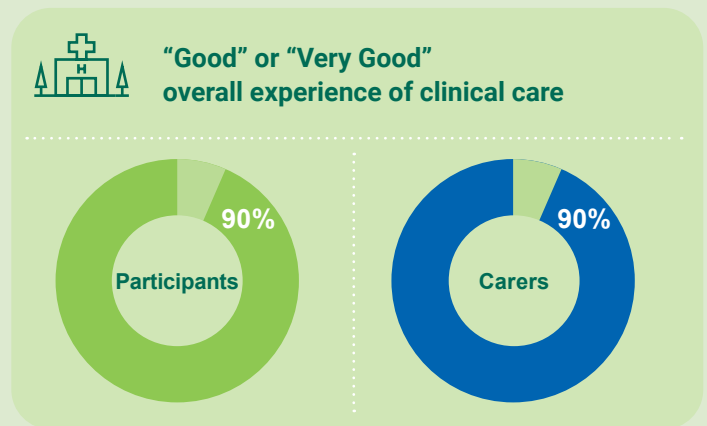
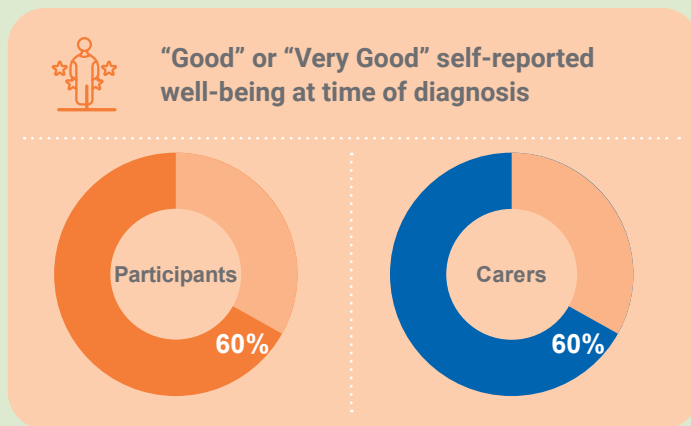
Neuropsychiatric symptoms and psychotropic medication¹



Referral to dementia post-diagnostic services⁴



Living experience



This infographic pertains to data submitted to the ADNeT Registry from commencement of data collection in March 2020 to December 2024 (N = 2,300 for MCI and 4,598 for dementia). Acronyms: ACE-III = Addenbrooke's Cognitive Examination III, FDG PET = Fluorodeoxyglucose Positron Emission Tomography, MCI = Mild Cognitive Impairment, MoCA = Montreal Cognitive Assessment, MMSE = Mini-Mental State Examination, MRI = Magnetic Resonance Imaging, RUDAS = Rowland Universal Dementia Assessment Scale

¹ Data collection for these data items commenced in April 2023 (N = 1,386 for MCI and 2,678 for dementia)

² These are the box plots of test scores of the cognitive assessments. The central box represents the interquartile range (IQR). The line and the number inside the box indicating the median. The lower and the upper edge of the box represents the first and the third quartile. The "whiskers" extend from the box to the smallest and the largest values (excluding outliers). Higher scores on these assessments indicate high level of cognitive functioning. ACE-III scores were optional for participants with a MMSE score recorded.

ACE-III data collection commenced in April 2023 (N = 419 for MCI and 802 for dementia).

³ Basic work-up includes core blood tests, cognitive assessment/s, functional assessment/s, and structural neuroimaging

⁴ Data only collected for people diagnosed with dementia (N = 904 in 2023 and 1,774 in 2024)



Australian
Dementia Network



MONASH
University

✉ adnet.registry@monash.edu

☎ 1800 314 421

🌐 www.australiandementianetwork.org.au